

*It's time for...*

# Wiltshire

TRAVEL TRADE GUIDE



[visitwiltshire.co.uk](http://visitwiltshire.co.uk)



# Explore

## THE TIMELESS BEAUTY OF WILTSHIRE

### Ready to start planning your next group visit?

In Wiltshire, you'll find rolling open countryside and expansive views. With over 8,000 footpaths around the county there's always somewhere to stretch your legs off the beaten track! Get the most out of our spacious landscapes by going for a walk, exploring by bike, horse riding, fishing or golf!

Nowhere else in England has such a concentration of iconic sites as Wiltshire. For thousands of years, travellers have been in awe of their grandeur and magic. Now you can explore them and experience that same sense of wonder for yourself. Around a quarter of the Great West Way® - a touring route between London and Bristol, runs through the breathtaking landscape of Wiltshire. Along ancient paths

once used by druids, pilgrims and drovers. Through lush river valleys. Over rolling chalk hills. Amid ancient woodland. Past picturesque towns and villages.

Visitors can expect a particularly warm reception from accommodation providers across Wiltshire. Indeed, **Salisbury** has been welcoming visitors since 1227. As you discover attractions such as **Salisbury Cathedral and Magna Carta** and **Old Sarum** you'll uncover layer upon layer of history. Take time, too, to explore charming market towns of **Bradford on Avon**, **Marlborough** and **Corsham**. Stroll through the picturesque villages of **Lacock** and **Castle Combe**. Browse our independent shops. Treat yourself in our cafés, pubs and restaurants. Discover our breathtaking countryside, perfect for outdoor pursuits.

Whether you are a tour operator or a group travel organiser, an FIT professional or a specialist in small or large groups, Wiltshire is the perfect destination for your next day trip, short break or longer excursion. Just 90 minutes from London, an hour from the south coast, and two hours from the Midlands or Wales, it's easily accessible too.

Wiltshire is timeless wonders, timeless places, timeless pleasures and timeless nature. Morning mist swirling round prehistoric stone circles. Historic houses nestling in 'Capability' Brown parkland. Museums bursting with exhibits of national importance. Delicious local produce. Areas of Outstanding Natural Beauty.

Make this the year you discover them all for yourself. There's always time for Wiltshire.

## Contents

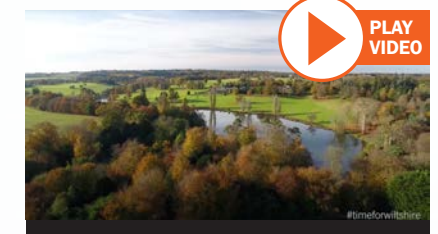
Explore Timeless Beauty of Wiltshire	2-3
Highlights – Top Picks and Ideas	4-5
Special Interest Tours & Packages	6-7
Journey Through the Great West Way®	8-9
Wiltshire on the Great West Way®	10-11
Suggested Itineraries	12-15
Local Guides, Tour Operators and Transport	16
Top 10 Reasons to Discover Wiltshire	17
Great Days Out	18-27
Fun Packed Activities	28-29
Celebrate the Seasons in Wiltshire	30
Annual Events and Entertainment	31
Timeless Towns and Villages	32-34
A Starring Role	35
Refreshment Stops & Retail Therapy	36-39
Group Friendly Accommodation	40-43
Helping You Sell Wiltshire	44-45
Map of Wiltshire, Key and General Information	46-47

**Photo Credits:** Anita Zalewska, Anna Stowe, Ash Mills, Charlie Ross, Chris Lock, Damien Davis, Emma Kirkup, English Heritage, Exclusive Ballooning, Gill Aspel, Great West Way, Helen Maybanks, Jane Gifford, Jenny Butler, Jody Gaisford, Josh Jones, Krzysztof Dac, Luxmuralis @ Lichfield Cathedral, Mammoth Screen, Mark Cooper, Mike Welch, National Trust, Neil Muir, Neville Stanikk, Nick Baumber, Paul Chambers, Pete Dewhurst, Salisbury Journal, Simon Baker, The Electric Eye Photography, VisitBritain, Nick Smith.

## Wiltshire at your fingertips

For further information on the enormous range of group-friendly things to see and do around the county go to [visitwiltshire.co.uk/groups](https://visitwiltshire.co.uk/groups)

Get inspired for your next group visit - It's Time for Wiltshire.



Additional videos can be seen at [visitwiltshire.co.uk/videos](https://visitwiltshire.co.uk/videos)

To receive all the latest information on special offers, competitions and more, sign up for our newsletter today at [visitwiltshire.co.uk/groups](https://visitwiltshire.co.uk/groups)

**Front cover photo:** Stourhead

**Back cover photo:** Wilton Windmill

## Get Social

Share your Wiltshire stories using [#timeforwiltshire](https://twitter.com/VisitWiltshire)



@VisitWiltshire



@visitwiltshire



VisitWiltshireLtd



VisitWiltshire

### Access for All

Wiltshire's countryside, towns and villages are here for all to enjoy, including disabled visitors and those with specific access needs. For detailed information on things to do, places to stay and ways to plan your visit to Wiltshire go to [visitwiltshire.co.uk/access-for-all](https://visitwiltshire.co.uk/access-for-all)

### GENERAL INFORMATION

This guide has been produced by VisitWiltshire and no part of it may be reproduced in any form without written permission. The information contained in it can be made available in other formats on request. This guide is available to download from: [visitwiltshire.co.uk/download](https://visitwiltshire.co.uk/download). Details of businesses included in this guide are based on information supplied by them at the time of production. Whilst every effort has been made to ensure accuracy, VisitWiltshire can accept no liability for any errors or omissions. © VisitWiltshire 2024.



# Highlights

## TOP PICKS AND IDEAS

### MAKE TIME FOR WILTSHIRE

Wiltshire is a magical place with a strong connection with the past making it the perfect place to enjoy the present. Explore world famous heritage sites, charming rural market towns, independent shops, fabulous food and drink, historic hotels, stately homes and glorious gardens. Wiltshire is timeless wonders, timeless pleasure, timeless nature and timeless places. Welcome to Wiltshire. If you're looking for new tours, talks and walks plus overnight packages, Wiltshire provides a great base for your group to explore.

### TRADITIONAL ORIGINAL

Visitors to Salisbury Cathedral and nearby Stonehenge are immersed in a journey through time, tradition, and ingenuity.

**Salisbury Cathedral**, with its majestic Gothic architecture, stands as a testament to centuries of craftsmanship and devotion. Inside, intricate carvings and awe-inspiring stained glass windows narrate stories of faith and community, preserving a rich cultural heritage.

**English Heritage's Stonehenge** offers a glimpse into the distant past, where ancient civilizations crafted a landscape of mystery and wonder. The colossal stone circles, meticulously aligned with celestial movements, evoke a sense of awe and curiosity, challenging visitors to ponder the ingenuity and significance of our ancestors.

Together, these iconic landmarks provide an enriching experience for groups, celebrating the timeless allure of England's historical and architectural treasures.



Salisbury



Longleat

Bowood House &amp; Gardens

### SPECTACULAR STATELY HOMES & GARDENS

**Bowood House and Gardens in Calne and Longleat near Warminster both bear the mark of industrious 18th-century master landscaper 'Capability' Brown.**

#### Bowood House and Gardens

At Bowood visitors can explore the flowing mix of woodlands and lawns sloping down to a lake, overlooked by the formal terraces of the imposing stately home and the seat of the Marquis and Marchioness of Lansdowne.

Bowood House has recently celebrated the 250th anniversary of oxygen being 'discovered' in their Laboratory. A new exhibition called 'A New Pure Air': Dr. Joseph Priestley and the Discovery of Oxygen, is where visitors can find out about the man who discovered Oxygen at Bowood House.

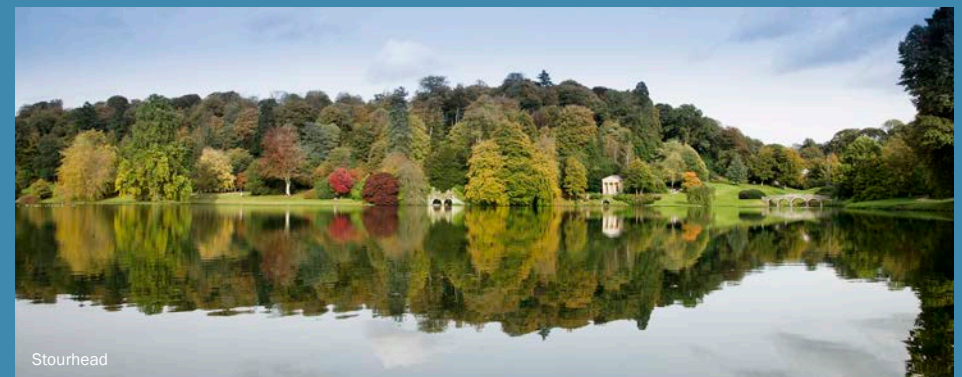
#### Longleat

Longleat is home to the 8th Marquess and Marchioness of Bath and Longleat House is a masterpiece of Elizabethan architecture that contains one of the most significant private collections in Britain.

It's been 75 years since Longleat became the first stately home to open its doors to the public on a fully commercial basis and it's 450 years since Elizabeth 1 visited. To celebrate this anniversary and Longleat's place as the original country house visitor attraction, visitors can see a new exhibition - 'Elizabeth 1 at Longleat' containing photographs, documents and objects relating to the ground-breaking 1949 opening.

#### Stourhead

Stourhead's breathtaking 18th century landscape garden has been described as 'a living work of art'. Its centrepiece is a magnificent lake, which visitors can walk around to see rare and exotic trees, mystical, grottoes and classical temples. Uncover the fascinating history of Stourhead House, a Palladian mansion with a fantastic regency library, Chippendale furniture, and a beautiful art collection. Explore at your leisure or book a specialist tour of the house or gardens.



Stourhead



# Special Interest TOURS AND PACKAGES



Salisbury Cathedral

## SALISBURY CATHEDRAL

**Salisbury Cathedral** offer a range of pre-booked specialist small group 'behind-the-scenes tours' such as Tower tours, Library tours, Stonemasonry Works Yard tours, Vestry tours and Graffiti tours. Groups can also pre-book a guided tour of the Cathedral and/or an Introductory talk. Throughout the year visitors can enjoy a range of free, informal weekly demonstrations to find out more about the Magna Carta, medieval clock, stained glass windows, meet the stonemasons and vestments and vergers.

## REME MUSEUM EXCLUSIVE SPECIALIST TOURS

**The REME Museum** is a modern, interactive military museum that tells the story of the Royal Electrical and Mechanical Engineers. You can explore the 8 galleries on a self-guided based or if you're looking for a more informative experience, there are a number of optional add-on experiences that can pre-booked for your group. These include:

- Guided tour of the galleries
- Behind-the-scenes viewing of the REME Archives
- Tour of our private hangar, home to the UK's largest collection of military repair and recovery vehicles.



REME Museum

## ENGLISH HERITAGE - STONEHENGE

**Stonehenge** is extremely group friendly and well worth a visit. This extraordinary 4,500-year-old marvel of human endeavour rises from an ancient landscape. For a truly memorable experience, arrange a pre-booked out-of-hours stone circle experience (limited spaces apply). Alternatively, groups can choose to hop off the shuttle at the halfway point to follow in the footsteps of their ancestors and approach the stones on foot.



Stonehenge



Bowood House

## BOWOOD HOUSE & GARDEN TOURS

**Bowood House & Gardens** is perfectly primed to welcome groups of 15 or more, with a variety of tours to suit all interests. To celebrate the 250th anniversary of oxygen being discovered, visitors can experience the 'new pure air' in Dr Joseph Priestley's former laboratory. Costumed guides will take you through the story of Priestley, his scientific discoveries, his politics, his time employed by the 1st Marquess of Lansdowne and why he emigrated to the USA.

Dive into a one-hour Bowood House tour to find out more about the fascinating history or take a guided tour of Bowood's Private Walled Garden, tailored to suit the seasons and flowers in bloom. Plan a visit mid-April to early June and book a guided walk of the Woodland Gardens. Catering packages also available.

## STOURHEAD HOUSE & GARDENS TOURS

Whether you're a special interest group, U3A, tour operator or a group of friends, a visit to Stourhead is always a special treat. There are a variety of group packages and guided tours for all interests. New tours include:

- Walled & Fruit Garden Tour – 90-minute exclusive tour of The Stourhead Walled Gardens with a Stourhead Gardener (between mid-April – October).
- Premium Horticultural Garden Tour – 120-minute exclusive tour of the Designed Landscape, Temples, and Collection pieces plus House admission and catering package available.

Visitors can also pre-book a guided tour of Stourhead House. Tours can be tailored to suit the needs of your group, whether it be an informal introduction to the property or a Premium Experience hosted by knowledgeable experts in their fields. Catering packages are also available for groups.



Stourhead

## LONGLEAT HOUSE GUIDED TOURS

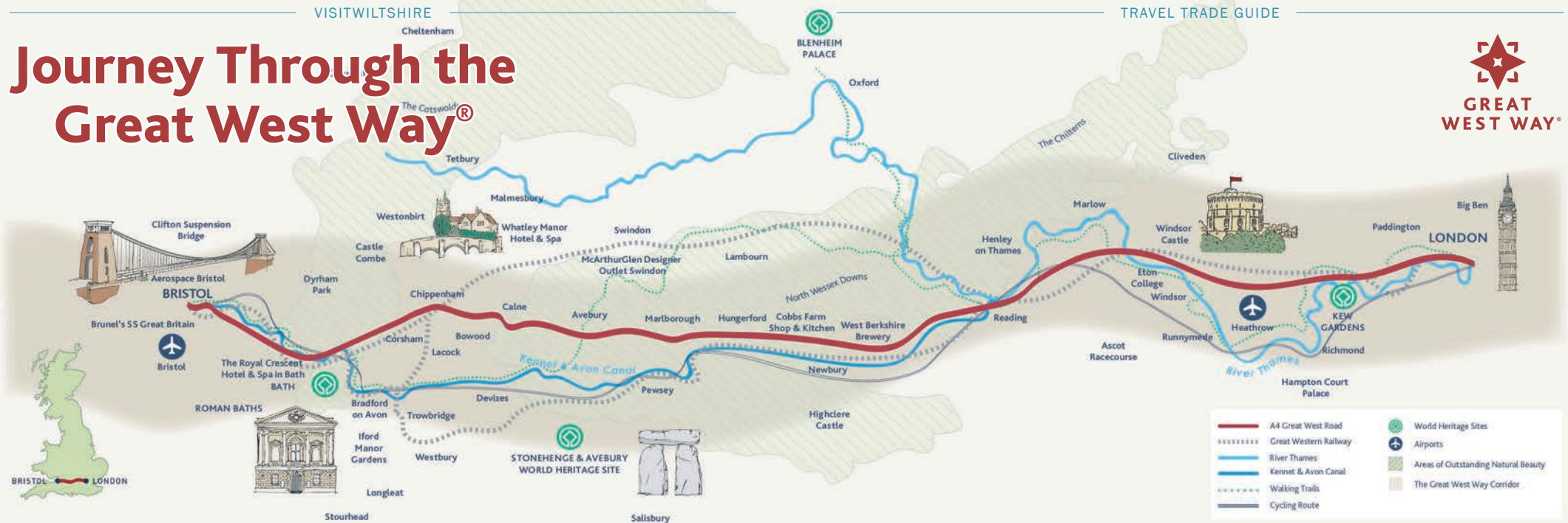
**Longleat House** is one of the best examples of Elizabethan architecture. Take a 1 hour guided tour with a knowledgeable house guide, which will give your group plenty of time to view some of the most exquisite rooms such as the Great Hall, the Libraries, the dining rooms and corridors. Following your house visit, groups are welcome to stroll through the formal gardens to the Orangery, built in 1807, and sit down to a delicious afternoon tea. Bespoke experiences are also available for smaller groups such as behind-the-ropes VIP tours of Longleat House and immersive VIP animal experiences.



Longleat House



# Journey Through the Great West Way®



We invite you to explore the Great West Way. An exciting touring route combining the world-renowned with the yet-to-be-discovered. At one end is **London** with its royal sights and rich cultural heritage; at the other, elegant **Bath** and vibrant **Bristol**. Between lie lush green landscapes, characterful villages, and relaxing riverside towns.

There are many ways for your visitors to experience the Great West Way.

They can travel by road, rail or water. On two feet or two wheels. Stay in one place for a while, or move on every day – if you add in all the tempting trails and off-the-beaten-track detours there are 500 miles or more to explore.

Along the Great West Way are three **Natural Landscapes**: the Chilterns, the **Cotswolds** and the **North Wessex Downs**, and the **UNESCO World Heritage Sites**

of **Stonehenge and Avebury**, **RHS Garden Wisley**, **Blenheim Palace** and **Bath**.

Visitors can enjoy canalside pubs and restaurants. Discover **Reading's** Museum and Abbey Quarter. Trawl **Hungerford's** antique shops and fairs. Take a pleasure cruise along the **Royal River Thames**.

Or unearth amazing archaeology at the **Roman Baths**. Stand on the site of the sealing of **Magna Carta** at Runnymede. Step aboard the last Concorde ever made at **Aerospace Bristol**. Enjoy a wine tour and tasting at **Bluestone Vineyard**. Watch the Changing of the Guard at **Windsor Castle**. Or explore one of the many National Trust properties along the route.

The Great West Way offers an extraordinary variety of English experiences. As visitors follow its twists and turns, they'll encounter the very essence of England. To make the most of all that the Great West Way has to offer, visitors will want to stay for a while and

immerse themselves in local life. Accommodation options include quirky glamping sites, pretty country B&Bs, cool city hotels... even stately homes and castles.

For international and domestic visitors alike, the Great West Way is easy to join and easy to follow. It passes by both Heathrow and Bristol airports. It's accessible for visitors travelling from the Channel ports and those already based in London. It will take them to places they've always dreamed of seeing, and secret spots that even some locals have yet to discover.

For suggested itineraries and bookable product go to **GreatWestWay.co.uk/traveltrade**



## Great West Way Discoverer pass

For an easy, hassle-free journey along the Great West Way, book a Great West Way Discoverer pass – with a choice of East, West and Global options, there's one that's right for you.

### What's included:

Unlimited Off-Peak train travel from London Paddington along the route to Bristol Temple Meads via Reading, with options to branch off towards Oxford, and Salisbury via Westbury (or London Waterloo to Salisbury with South Western Railway). It also includes unlimited bus travel on selected services along the route.

The Domestic pass is available as 1-day and 7-day options; the International pass as 3-day and 7-day options. Prices start from just £29.00 per person.

You can buy online at **GWR.com**, or from your local station. If you are travelling from overseas, international passes (similar to a BritRail pass) can be purchased online at **ACPRail.com** or via your travel agent.

So book a Great West Way Discoverer pass today and make the most of your Great West Way adventure. For further details see

**GreatWestWay.co.uk** or go to **GWR.com**



# WILTSHIRE

## on the Great West Way®

Around a quarter of the Great West Way runs through Wiltshire. Past white horse carvings that have watched over the **Vale of Pewsey** for generations. Across rolling hillsides in the **North Wessex Downs**. Along routes that brought druids to **Stonehenge**, drovers to market, pilgrims to **Salisbury Cathedral**.

Many of Wiltshire's timeless towns and villages are within easy reach of the Great West Way. As well as being fascinating places to visit in their own right, they make excellent stopping off points for lunch along your journey. Marvel at **Bradford on Avon's** 14th century tithe barn. Visit the 'discovery' town of **Calne**. Seek out the wealth of historic buildings in **Chippenham**. Follow in the footsteps of **Poldark** in **Corsham**. Discover the rich heritage of Georgian houses in **Devizes**. Wander around the National Trust village of **Lacock**. Explore hilltop **Malmesbury**, England's oldest borough. Or stroll through the handsome former staging post of **Marlborough**. **Swindon** is renowned for its entertainment and leisure opportunities; **Trowbridge** for its unique industrial architecture.

Much of the Great West Way's appeal lies in its extraordinary variety. The **Stonehenge** and **Avebury World Heritage Site** may well feature on your itinerary. But allow time to discover Wiltshire's lesser known attractions too: relax aboard a narrowboat on the **Kennet & Avon Canal**; 'drive' a train simulator at **STEAM - Museum of the Great Western Railway**; explore the interactive immersive



Avebury

displays at the **REME Museum**; stroll around 'Capability' Brown parkland at **Bowood House and Gardens**; discover the natural beauty of tropical butterflies at **Studley Grange Garden and Leisure Park**; How about a visit to The National Self Build & Renovation Centre (NSBRC), Swindon, the UK's only permanent venue for independent homebuilding, offering advice & support, and a series of shows and themed workshops. Or a visit to Carvers Hill Estate, near Marlborough, for a tour of the vineyard and winery. Grab a bargain and shop till you drop at **McArthurGlen Designer Outlet** Swindon. a tour of **Parade House** - a quintessential English Georgian residence. Within easy reach of the Great West Way is **Longleat** - take a stroll on the wild side in the **Safari Park** or book a tour of **Longleat House**. Also within easy reach of the route is the medieval city of Salisbury which has so much to offer. Take a tower tour at **Salisbury Cathedral** and wander around the beautiful Cathedral Close.

Afternoon tea is an English institution, and where better to sample a

sumptuous spread than at the Parade House, Trowbridge, where you can pre-book an afternoon tea and a tour at this quintessential English Georgian residence. Additionally afternoon tea is serviced at **The Angel Hotel**, Chippenham, **Legacy Rose & Crown**, Salisbury, **The Old Bell Hotel**, Malmesbury, or **The Bridge Tea Rooms**, Bradford on Avon. An authentic English pub experience is equally hard to beat. So allow time for your visitors to settle down at one of Wiltshire's many traditional inns. If their Great West Way adventure includes an overnight stay, they'll find B&B, self-catering, farm stay, glamping and hotel options aplenty.

Rail connections are excellent, linking Wiltshire with London's Paddington and Waterloo stations at one end, Bristol and Bath at the other. Within 90 minutes, or less, of leaving the capital visitors can be here, enjoying authentic English experiences and creating lasting memories.

Find out more at **GreatWestWay.co.uk/plan-your-way/wiltshire**



Malmesbury



Corsham Peacock



Bradford on Avon



Lacock Abbey



Bowood



# SUGGESTED Itineraries

## A ROYAL JOURNEY ALONG THE Great West Way®

Following a road commissioned by King Charles I, nowhere is as quintessentially English or thoroughly royal as the Great West Way. Here's how to enjoy a royal journey along the route:

### DAY 1: Hampton Court Palace

Home to King Henry VIII and all six of his wives, Hampton Court Palace was a royal residence until 1737. Visit the sumptuous Baroque apartments, then stroll through 60 acres of beautiful riverside gardens. From here, head to **Runnymede** to visit the Magna Carta Memorial and Kennedy Memorial. Then take a 2½ hour **French Brothers** boat trip along the **Royal River Thames**, admiring Windsor Castle from on board.

**Overnight:** Stay in Windsor.

### DAY 2: Windsor

Start the day with a **Tours2Order** walking tour, before visiting **Windsor Castle**, the oldest and largest inhabited castle in the world. Queen Victoria spent most of her time there and it was the late Queen Elizabeth II's favourite weekend home. St George's Chapel within the grounds of the Castle was the setting for the wedding of the Duke and Duchess of Sussex and is Queen Elizabeth II's final resting place. Tour the State Apartments and Chapel, then drive to Malmesbury for an overnight stay.



French Brothers Cruise



The Long Walk, Windsor



St George's Chapel, Windsor Castle

- Hampton Court Palace
- Windsor • Malmesbury
- Berkeley Castle
- Bristol

4  
DAYS

**Overnight:** Stay in Malmesbury at either **The Old Bell Hotel** – family-owned, it is reputed to be England's oldest. Or **Whatley Manor Hotel & Spa** – a beautiful English manor house in a picture perfect setting.

### DAY 3: Malmesbury and Berkeley Castle

Explore **Malmesbury**, England's oldest borough, including the 12th century Abbey where you will find the tomb of Athelstan, first king of all England. Then move on to **Berkeley Castle** – given to the family in 1153 by Henry II, it has received royal guests ever since and is open to visitors from April to October.

**Overnight:** Stay in Bristol.

### DAY 4: Bristol

Visit **Brunel's SS Great Britain**, launched by Prince Albert in 1843 and visited by Queen Victoria when it was docked in London in 1845.



Brunel's SS Great Britain, Bristol

## Swindon EXPECT THE UNEXPECTED

### DAY 1

**AM:** Spend the morning at **STEAM – Museum of the Great Western Railway**, housed in the Grade II listed buildings of Brunel's former railway works.

**Lunch:** Various options at **McArthurGlen Designer Outlet**.

**PM:** Avid shoppers can hunt for bargains at **McArthurGlen Designer Outlet**, on the same site as STEAM, where over 100 stores sell a range of designer and high street labels at discounts of up to 60%. While train buffs can continue the steam theme at Swindon & Cricklade Railway, nearby.

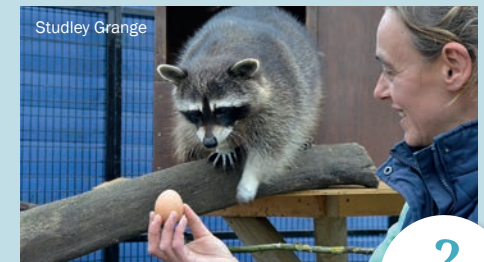
**Overnight:** Stay at Lydiard Park Hotel, Swindon

### DAY 2

**AM:** Visit the historic **Lydiard House Museum** and Park. Stroll around the 18th century walled garden and formal parkland, then tour elegant staterooms in the magnificent Palladian house.

**Lunch:** Swindon area.

**PM:** Be transported to the tropics as you take a magical



Studley Grange

- STEAM Museum
- McArthurGlen Designer Outlet
- Swindon & Cricklade Railway
- Lydiard Park
- Studley Grange Garden & Leisure Park
- REME Museum

2  
DAYS

walk through hundreds of the world's most beautiful butterflies at **Studley Grange Garden and Leisure Park**. Meet otters, goats, meerkats and more in the outdoor Animal Paddock. Or browse the Garden Centre for green fingered enthusiasts. Time permitting, take a detour to **REME Museum** in Lyneham to discover the history of the Royal Electrical and Mechanical Engineers.

**Overnight:** Swindon area.

## Salisbury TRADITIONAL, ORIGINAL LAYER UPON LAYER OF HISTORY

### DAY 1

**AM:** Begin your day with a visit to **Salisbury Cathedral**. Highlights include Britain's tallest spire and the finest original 1215 Magna Carta. Pre-book a tower tour for wide-ranging views across the city. After elevenses at any of the local cafes, visit the other attractions in the Close to uncover layer upon layer of history: **The Salisbury Museum**, with its world-class archaeology collections. **The Rifles Berkshire & Wiltshire Museum**, part military museum, part historic house and part riverside garden.

**Lunch:** Salisbury Area

**PM:** Visit St Thomas's Church to see the UK's largest surviving Doom Painting, or explore the Iron Age hillfort of **Old Sarum**. Within the city centre you will also find a range of unique, independent shops, including Fisherton Mill with its gallery, café and artist studios. On Tuesdays and Saturdays (except the third Tuesday in October) you can experience the hustle and bustle of the popular Charter Market, and if you visit towards the



- Salisbury Cathedral
  - The Salisbury Museum
  - The Rifles Berkshire & Wiltshire Museum
  - St Thomas's Church
  - Old Sarum • Fisherton Mill
- Find out more [www.visitsalisbury.co.uk](http://www.visitsalisbury.co.uk)

1+  
DAYS

end of the year, Salisbury's enchanting Christmas Fayre will be in full swing.

**Evening:** Choose from a wide range of entertainment options at Salisbury Arts Centre and Salisbury Playhouse.

**Overnight:** If you have time, extend your visit with an overnight stay at **LLegacy Rose & Crown, Milford Hall Hotel** or **The Stones Hotel**.

Nearby you'll find Boscombe Down Aviation Collection, River Bourne Community Farm, Salisbury Racecourse and Cholderton Rare Breeds Farm and Bluestone Vineyards.



## Wiltshire's TIMELESS WONDERS

### DAY 1

**AM:** Along with Avebury and other associated monuments, iconic **Stonehenge** forms part of Wiltshire's World Heritage Site and is a great place to begin your day. Be sure to take in Stonehenge visitor centre for outstanding exhibitions setting the monument in its historic context. Or pre-book a tour with one of our local guides (see page 16).

**Lunch:** Amesbury or Salisbury areas.

**PM:** Head to **The Salisbury Museum** – home to one of Europe's most extensive collections of finds from Stonehenge, as well as the Monkton Deverill Gold Torc and the grave of the Amesbury Archer – to discover more of the World Heritage Site's story.

**Overnight:** Amesbury Area - **Holiday Inn Salisbury Stonehenge** or **A Little Place**.

### DAY 2

**AM:** Keep an eye out for Wiltshire's famous White Horses, carved into the rolling chalk hillsides, as you travel north. At the heart of a prehistoric complex in the North Wessex Downs, today's first stop is at



2  
DAYS

- Stonehenge • The Salisbury Museum
- White Horses • Avebury
- Silbury Hill • West Kennet Long Barrow
- Wiltshire Museum

**Avebury.** Explore the stone circle itself, the largest in the world, then take a stroll around the charming village. While you are here, be sure to visit the Alexander Keiller Museum and Avebury Manor & Garden. Other unique sites in the area include mysterious Silbury Hill, the largest man-made mound in Europe, and West Kennet Long Barrow, one of Britain's largest Stone Age burial sites.

**Lunch:** Calne or Devizes areas.

**PM:** Spend the afternoon at **Wiltshire Museum** in Devizes, where you'll find outstanding galleries spanning Neolithic, Bronze Age, Iron Age, Roman, Saxon and Medieval times, including Gold from the Time of Stonehenge.

## Breathtaking HOMES & GARDENS

### DAY 1

**AM:** Your day begins in medieval Malmesbury. Visit the magnificent Malmesbury Abbey and take a stroll around the independent shops in this pretty Cotswold village.

**Lunch:** **The Old Bell Hotel**.

**PM:** On to the magnificent pastoral landscape at **Bowood House and Gardens**, created by master landscaper 'Capability' Brown.

**Overnight:** Calne or Melksham areas

### DAY 2

**AM:** On to delightful **Iford Manor Gardens**, where romantic grounds evoke an Edwardian version of Tuscany.

**Lunch:** Bradford on Avon area

**PM:** Choose between the famous 18th century gardens at **Stourhead**, with their lake and classical temples. Or **Longleat**, where the impressive Elizabethan house is surrounded by 900 acres of stunning 'Capability' Brown landscape.

**Overnight:** **Old Bell Hotel** Warminster



3+  
DAYS

- Bowood • Iford Manor Gardens
- Stourhead • Longleat • Larmer Tree
- Westonbirt, the National Arboretum

### DAY 3

**AM:** Cross Cranborne Chase to visit the extraordinary Victorian gardens at Larmer Tree, recognised as a Garden of National Importance.

**Lunch/Afternoon Tea:** Wilton or Salisbury areas.

**PM:** For those with more time, visit Westonbirt, the National Arboretum who are just across the county border in the Cotswolds.

## Picture Perfect WILTSHIRE

### DAY 1

**AM:** Your day starts with a visit to two locations from *Sense & Sensibility*: **Mompesson House** in Salisbury, and magnificent Wilton House which also featured in *The Crown*, *The Young Victoria* and *Pride & Prejudice*.

**Lunch:** Wilton or Tisbury areas.

**PM:** Travel on to **Old Wardour Castle**, as seen in *Robin Hood Prince of Thieves*, pausing briefly to view Fonthill Lake where scenes from *Chocolat* were filmed.

**Overnight:** **Old Bell Hotel**, Warminster

### DAY 2

**AM:** Begin with a visit to the breathtaking gardens at **Stourhead**, which film buffs will recognise as another setting from *Pride & Prejudice*.

**Lunch:** Enjoy lunch here, then travel north, passing the Westbury White Horse on your way.

**PM:** Spend some time exploring **Bradford on Avon** taking time to visit the Tithe Barn, Saxon Church and wander long the Kennet & Avon Canal. Stop at The Bridge Tea Rooms for afternoon tea.

- Mompesson House
- Fonthill Lake
- Old Wardour Castle
- Stourhead
- Lacock
- Corsham
- Castle Combe



3+  
DAYS

**Overnight:** Chippenham area  
- **Best Western Plus Angel Hotel**.

### DAY 3

**AM:** This morning's destination is the stunning National Trust village of **Lacock**, where scenes from *The White Princess*, *Downton Abbey*, *Cranford* and some of the *Harry Potter* films were shot.

**Lunch:** Lacock or Corsham.

**PM:** While away the afternoon in **Corsham**, where the High Street represented 18th century Truro in the first series of *Poldark*. Then, if you are able to stay an extra night, travel via the quintessentially English village of Castle Combe – as seen in *Dr Thorne*, *War Horse*, *The Wolf Man*, *Stardust* and *Dr Dolittle*.

## Magnificent INDUSTRIAL HERITAGE

### DAY 1

**AM:** Your tour begins in Wiltshire's county town of Trowbridge, where 1,000 years of the woollen cloth industry left a rich architectural legacy.

**Lunch:** Pre-book a group tour and lunch at Parade House, Trowbridge.

**PM:** In its textile production heyday, **Bradford on Avon** was home to more than 30 cloth factories. Today the impressive walls of Abbey Mill still flank the river, while former weavers' cottages cling to the hillside above.

**Overnight:** **Woolley Grange Hotel**, Bradford on Avon

### DAY 2

**AM:** Owing its former prosperity to the wool trade, honey-coloured **Corsham** makes a great stopping off point on your journey to Malmesbury, where you can uncover the history of fine lace making at the Athelstan Museum.

**Lunch:** Swindon.

**PM:** On arrival in Swindon, step back in time at **STEAM – Museum of the Great Western Railway**.

**Overnight:** Swindon or Devizes areas.

Wilton Windmill



3  
DAYS

- Trowbridge
- Bradford on Avon • Corsham
- STEAM Museum
- Kennet & Avon Canal
- Crofton Beam Engines
- Wilton Windmill • The Merchant's House

### DAY 3

**AM:** Take to the Kennet & Avon Canal for a relaxing narrowboat trip, or stroll along the towpath beside the impressive flight of locks at Caen Hill.

**Lunch:** Devizes or Marlborough areas.

**PM:** Visit The Merchant's House in Marlborough before heading to the nearby Crofton Beam Engines to discover magnificent 200-year-old working steam engines. On Sundays and Bank Holiday Mondays you can also visit Wilton Windmill nearby.



# Local Guides

## TOUR OPERATORS AND TRANSPORT

### GUIDES ONLY

#### TOURS 2 ORDER

07827 715353  
[graham@tours2order.com](mailto:graham@tours2order.com)  
[www.tours2order.com](http://www.tours2order.com)



#### WILTSHIRE WALKS

Mobile walking guide app includes over 200 walks in and around Wiltshire. Download on the iTunes or Google Play app store.  
[www.localwalks.co.uk/wiltshire-walks](http://www.localwalks.co.uk/wiltshire-walks)

#### DRIVER GUIDE WITH GROUP TRANSPORT (large car, minibus, coach)

#### BRITAIN'S BEST HERITAGE TOURS

01985 840049  
[hello@bbhtours.co.uk](mailto:hello@bbhtours.co.uk)  
[www.bbhtours.co.uk](http://www.bbhtours.co.uk)



#### MAD MAX MINIBUS TOURS

07990 505970  
[maddy@madmaxtours.co.uk](mailto:maddy@madmaxtours.co.uk)  
[www.madmaxtours.co.uk](http://www.madmaxtours.co.uk)



#### STONEHENGE & AVEBURY WITH OLDBURY TOURS

07947 488665  
[info@oldburytours.co.uk](mailto:info@oldburytours.co.uk)  
[www.oldburytours.co.uk](http://www.oldburytours.co.uk)

#### STONEHENGE & SALISBURY GUIDED TOURS

0845 519 8248  
[tours@stonehengegetravel.co.uk](mailto:tours@stonehengegetravel.co.uk)  
[www.StonehengeTravel.co.uk](http://www.StonehengeTravel.co.uk)

#### THE STONEHENGE TOUR

01202 338420  
[enquiries@thestonehengegetour.info](mailto:enquiries@thestonehengegetour.info)  
[www.thestonehengegetour.info](http://www.thestonehengegetour.info)

#### CAR HIRE

##### AUTO EUROPE

01233 225114  
[reservations@autoeurope.co.uk](mailto:reservations@autoeurope.co.uk)  
[www.autoeurope.co.uk](http://www.autoeurope.co.uk)

##### VEEZU

01793 701701  
 Taxi and private hire platform  
 tap-and-go download the app at  
[www.veezu.co.uk/download](http://www.veezu.co.uk/download)

### GROUND HANDLERS

#### SALISBURY, STONEHENGE & SARUM TOURS

01722 421777  
[info@salisburystonehengegetours.co.uk](mailto:info@salisburystonehengegetours.co.uk)  
[www.salisburystonehengegetours.co.uk](http://www.salisburystonehengegetours.co.uk)

#### TRANSPORT ONLY FOR GROUPS (eg car, taxi, minibus, coach, train)

##### EXECUTIVE CONNECTION

01722 333333  
[info@salisburystonehengegetours.co.uk](mailto:info@salisburystonehengegetours.co.uk)  
[www.executiveconnection.co.uk](http://www.executiveconnection.co.uk)

##### VALUE CARS GROUP

01722 505050  
[enquiry@salisbury-valuecars.co.uk](mailto:enquiry@salisbury-valuecars.co.uk)  
[www.salisbury-valuecars.co.uk](http://www.salisbury-valuecars.co.uk)

##### SALISBURY REDS

01202 338420  
[talk2us@salisburyreds.co.uk](mailto:talk2us@salisburyreds.co.uk)  
[www.salisburyreds.co.uk](http://www.salisburyreds.co.uk)

##### GREAT WESTERN RAILWAY

0345 700 0125  
 Please use online contact form  
 on our website: [www.gwr.com](http://www.gwr.com)

##### SOUTH WESTERN RAILWAY

0345 6000 650  
 Please use online contact  
 form on our website:  
[www.southwesternrailway.com](http://www.southwesternrailway.com)

**CLICK HERE FOR LOCAL  
 INFORMATION ON TOURS AND  
 SIGHTSEEING IN WILTSHIRE**



# 10 top reasons TO VISIT WILTSHIRE

Kennet & Avon Canal

With so much to see and do around the county, whether you're planning your first visit to Wiltshire or your twenty first, you're sure to find new stories around every corner. Here are some suggestions for making the most of your time here:



Salisbury Cathedral

- The medieval city of **Salisbury** with its ageless beauty and captivating history, **Salisbury Cathedral** boasts Britain's tallest spire and best preserved original 1215 Magna Carta. Whilst the Cathedral Close is home to The Salisbury Museum, The Rifles Berkshire & Wiltshire Museum, Mompesson House and Arundell's the home of former Prime Minister Sir Edward Heath.

- Among Wiltshire's many timeless villages, the stars of the show are the film-makers favourites of **Lacock** and **Castle Combe**; the perfect places to journey back in time.



Avebury Stone Circle

- Steeped in history and mystery, no visit to Wiltshire would be complete without taking in **Stonehenge** and **Avebury**: two inimitable stone circles; one outstanding **World Heritage Site**.

- With miles of ancient drove roads and uncrowded country lanes, almost half of Wiltshire's breathtaking countryside falls within **Natural Landscapes** – rural England at its very best.



Pewsey White horse

- Among Wiltshire's most iconic views are the **White Horses** carved into its chalk hillsides. Keep an eye out for them as you travel around.

- Wiltshire has characterful market towns aplenty. **Bradford on Avon**, a honey-coloured gem. **Calne**, where the English technique of producing ham and bacon was invented. **Corsham**, whose historic high street starred as Truro in BBC's *Poldark*. Stylish, cosmopolitan **Marlborough**, a handsome former staging post. **Swindon** with its excellent range of leisure opportunities.

- Creativity is at the heart of the Wiltshire experience. Here you'll find inspirational **festivals, events and entertainment**, all year round.

- The **Kennet & Avon Canal** stretches across the centre of the county, offering a range of ways to appreciate Wiltshire's timeless scenery. Walk or cycle along the towpath, take to the water in a canoe, or relax on a soothing narrowboat cruise.

- Wiltshire offers a **great all-round shopping experience**, with designer brands and high street names, independent outlets and shopping malls, farm shops and markets.

- To make the most of all that Wiltshire has to offer, it's well worth staying a night or two – you'll find a great range of **group-friendly accommodation** to choose from.



# Great Days Out



Longleat House and grounds



East Terrace Bowood House

Whether you're here for a day, a weekend or longer, no visit to Wiltshire would be complete without experiencing our timeless wonders. Visit **Salisbury Cathedral**, home to the tallest spire in Britain it also houses the finest of four original 1215 **Magna Carta** manuscripts. Shrouded in mystery with a magnetism that has drawn people to them for thousands of years, **Stonehenge** and **Avebury** are equally breathtaking – two monolithic stone circles within one outstanding **World Heritage Site**.

Other unmissable attractions include stately homes and gardens such as **Bowood**, **Iford Manor**, **Sourhead** and **Longleat**.



Old Sarum

Visitor can explore the English Heritage sites including **Old Sarum**, which evolved from a Neolithic community into the original site of Salisbury and the impressive **Old Wardour Castle**.

In addition to **Stourhead** and **Avebury**, there are many other National Trust sites to visit for a great day out, such as **Lacock Abbey** and **Fox Talbot Museum** and **Mompesson House** in Salisbury.

You can combine super-friendly animals with wine appreciation at **Cholderton Rare Breeds Farm Park** and **Bluestone Vineyards**. Take a walk on the wild side at **Studley Grange Garden** and **Leisure Park**.

There are plenty of museums to visit for a great day out. Learn about army history at **REME Museum**. Or discover Wiltshire's industrial heritage at **STEAM** – Museum of the Great Western Railway which narrates the history of all those involved in building, operating, and travelling on this pioneering train network.

For further ideas and inspiration go to: [visitwiltshire.co.uk/groups](http://visitwiltshire.co.uk/groups)

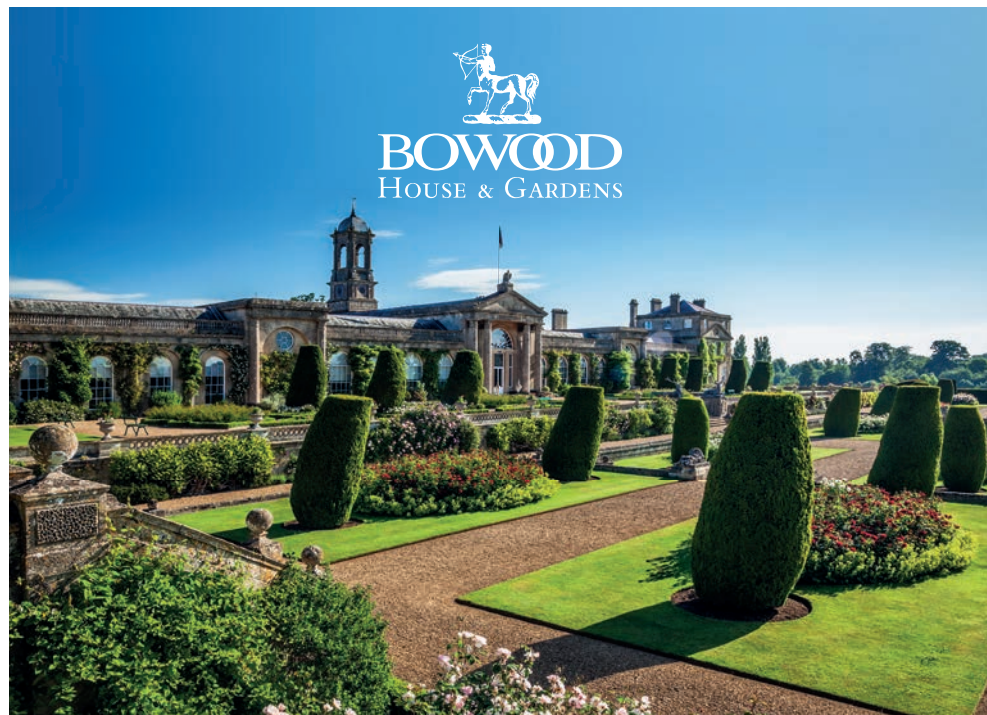


Old Wardour



STEAM





  
**BOWOOD**  
 HOUSE & GARDENS



## DISCOVER MORE AT BOWOOD

House & Gardens  
 Private Walled Garden | Arboretum  
 Guided Tours and Group Rates available

On the 1st August, we are excited to celebrate the 250th anniversary of oxygen being 'discovered' in the Laboratory at Bowood House by Dr. Joseph Priestley. NEW - Priestley tours available on request.

29th March - 3rd November 2024

**VISIT BOWOOD.ORG**  
**CALL 01249 812 102**

Bowood House & Gardens, Calne, Wiltshire, SN11 9NF

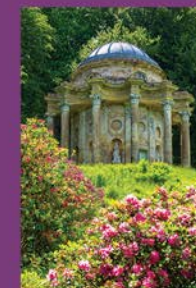
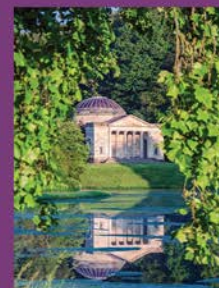


  
**National Trust**

## Stourhead, Wiltshire

18th-century Palladian Mansion and world-famous landscape garden, described as '*a living work of art*'.

**Group discounts and bespoke tours available**



[nationaltrust.org.uk/stourhead](https://nationaltrust.org.uk/stourhead)

01747 841152



# Report for Duty

## FOR A GREAT DAY OUT



Located just outside MOD Lyneham in north Wiltshire, the REME Museum offers an opportunity to uncover the fascinating history of military engineering. Awarded the VisitEngland Gold accolade in 2022-23 and Hidden Gem accolades for four years previously.

Since 1942, REME have been "keeping the punch in the Army's fist" by making sure that the British Army's cutting-edge equipment is battle-ready.

The REME Museum's interactive galleries feature everything from rare recovery vehicles to a tiny toothbrush made by a Prisoner of War. Starting on the beaches of Normandy, journey through time and uncover tales of skill, innovation and bravery. From the REME Officer who saved Volkswagen from the ruins of war, to the intrepid mechanic who powered the first overland crossing of Antarctica.



In 2024, the Museum introduced two very exciting new displays. Discover the story of Corporal Adam 'Dusty' Miller and how he earned the Conspicuous Gallantry Cross, the highest gallantry medal awarded to a REME soldier and the only one of its kind. Plus, don't miss the unique collaborative art exhibition by the REME Museum and the REME Officers' Mess, open until the end of the year.

Leave time to explore the 'Dig for Victory' Vegetable Patch, Wildlife Garden, and Memorial Garden to the servicemen repatriated through RAF Lyneham. Or plan your visit on one of the special event days, like Wartime Britain or our Model Show, check online for upcoming dates.

### Group Exclusives

REME offer a number of optional add-on experiences you can book as part of a group visit:

- Guided tour of the galleries
- Behind-the-scenes viewing of the REME Archives
- Tour of our private hangar, home to the UK's largest collection of military repair and recovery vehicles.

### Fully Equipped

The Museum strives to be fully

accessible and meet every visitor's needs. Get in touch if you have specific access requirements.

Re-fuel with a catered lunch or cream tea from Crown's Café. All diets can be catered for and sit-down meals in the conference room can be arranged.

Dedicated coach parking with drop-off outside the Museum entrance. Coach drivers get free entry.

Book your visit today at [enquiries@rememuseum.org.uk](mailto:enquiries@rememuseum.org.uk) or call 01249 894869.

Find out more at [www.rememuseum.org.uk](http://www.rememuseum.org.uk)



## Iford Manor Gardens

The Cartwright-Hignett family at Iford Manor, near Bath, welcome visitors to their internationally renowned Grade 1 listed gardens, featured in the remake of "The Secret Garden" (2020). Formerly home to garden designer Harold Peto from 1899-1933, now with Head Gardener Steve Lannin.



[www.ifordmanor.co.uk](http://www.ifordmanor.co.uk) | [info@ifordmanor.co.uk](mailto:info@ifordmanor.co.uk) | +44 (0)1225 863146

Open April to September  
Out of hour visits and tours available  
Coaches & groups by appointment  
Please e-mail us for details  
**WINNER**—Little Treasure of Britain  
2017 Group Travel Awards

A glorious restoration of a  
17th century silk merchant's house.



Guided tours 60-90 minutes, can tailor to requirements and schedules. Specialist guides available for art, architecture and local history groups or self-guided tours. Large groups accommodated

On the historical High Street, an ideal place  
to visit when coming to Marlborough.

[www.themerchantshouse.co.uk](http://www.themerchantshouse.co.uk)  
01672 511491 [visits@themerchantshouse.co.uk](mailto:visits@themerchantshouse.co.uk)  
132 High Street, Marlborough, SN8 1HN





# Cholderton

RARE BREEDS FARM

Make memories at our Family Farm, Café & Vineyards

British Rare Breeds - Vineyard Tours - Event Spaces - Animal Experiences  
Delicious Local Food - Cafe & Catering - Indoor Play Areas - Homemade Cakes



[CHOLDERTONRAREBREEDSFARM.COM](http://CHOLDERTONRAREBREEDSFARM.COM) - OPEN 7 DAYS A WEEK



Plenty of  
free car  
& coach  
parking

Stay in our  
family friendly  
70 bed accommodation!

[STONEHENGEHOSTEL.CO.UK](http://STONEHENGEHOSTEL.CO.UK)

Perfect for groups!





## Immerse yourself in the fascinating story of British Army flying by visiting a local hidden gem.

The Army Flying Museum sits adjacent to the Army Air Corps Airfield at Middle Wallop, just 20 minutes from Salisbury, and offers access and affordability to visitors; pay for admission once, and you will receive free entry to the Museum for a whole year.

The Museum houses the impressive journey of British soldiers in the air from the pioneering days of balloons and kites to the Glider Pilot Regiment landing at Arnheim, right through to modern helicopter operations. Visitors are frequently surprised at the volume of artefacts, medals, fixed wing and rotary aircraft. Imaginative displays with a clever use of interactives provide for fascinating insight into the history of British Army aviation.

For front row seats of these aircraft in action, visit the Museum's Apache Café. Overlooking the active airfield, and open daily, this is an excellent spot to enjoy a bite to eat or drink, whilst admiring all manner of aircraft.

The Museum offers a packed event programme and free creative activities for children at all the school holidays alongside a regular event programme of lectures, concerts and family friendly events.



The Army Flying Museum  
is open daily from 9am to 4pm.  
For more information visit [www.armyflying.com](http://www.armyflying.com)

[www.boscombedownaviationcollection.co.uk](http://www.boscombedownaviationcollection.co.uk)  
Hangar 1 South, Old Sarum Airfield, Old Sarum  
Salisbury, SP4 6DZ

**The Collection and gift shop are in two large 1917 WW1 hangars**

**Experience local aviation history from the Royal Flying Corps to modern fast jets**

**Visitors can sit in the pilot's seat of over 30 aircraft and Cockpits**

**Ongoing restorations and many artefacts can be viewed**

**Tel: 01722 323636**

## WHICH WAY NEXT?

Join the Great West Way Official Operator Programme and begin your next adventure at [GreatWestWay.co.uk/traveltrade](http://GreatWestWay.co.uk/traveltrade)

Contact [flowallace@GreatWestWay.co.uk](mailto:flowallace@GreatWestWay.co.uk) to find out more.

**Studley Grange**  
Garden & Leisure Park

Butterfly House  
Zoo & Farm Park  
Garden Centre  
Food Hall  
Giftware  
Restaurant

[www.studleygrange.co.uk](http://www.studleygrange.co.uk) SN4 9QT

## STEAM

[www.steam-museum.org.uk](http://www.steam-museum.org.uk)

STEAM - Museum of the Great Western Railway  
Fire Fly Avenue  
Swindon  
SN2 2EY

## OLD SARUM

### EXPLORE A LOST CITY

Stand in the footprint of the original Salisbury Cathedral

Search 'Old Sarum' to book your visit

ENGLISH HERITAGE

Step into England's story

## STONEHENGE

A place of ancient mystery

Search 'Stonehenge' to book your visit

ENGLISH HERITAGE

Step into England's story





**LONGLEAT**

# Groups at Longleat

Steeped in history,  
embellished with eccentricity...  
**uncompromisingly astonishing**



*Exclusive group discounts and incentives*

*Outstanding client service*

*Unforgettable guest experiences*



The 9,000 acre Longleat Estate stretches across the beautifully rural county border between Somerset and Wiltshire. **Sat Nav: BA12 7JS**

**01985 844328 | [groups@longleat.co.uk](mailto:groups@longleat.co.uk) | [longleat.co.uk/groups](http://longleat.co.uk/groups)**



## Salisbury Cathedral and Magna Carta



With bespoke guided tours and exclusive behind-the-scenes experiences, Salisbury Cathedral makes for an unforgettable day out for groups of all sizes and interests. Get in touch to plan your group's visit.

Call **01722 555 120** or email **[groups@salcath.co.uk](mailto:groups@salcath.co.uk)** to find out about our special rates for groups.

**VISIT OUR WEBSITE**

**The Spirit of Water Flower Festival**  
COMING MAY 2025



[www.salisburycathedral.org.uk](http://www.salisburycathedral.org.uk)

**Salisbury  
Cathedral**  
and  
Magna Carta





Marlborough College Summer School

# Fun Packed Activities

Whether your group's ideal break is calming, comforting, refreshing, or bursting with high adrenalin excitement, Wiltshire will put back what the rest of the week takes out.

With almost half its breathtaking landscape falling within an **Area of Outstanding Natural Beauty**, Wiltshire is perfect for outdoor pursuits. Walkers and cyclists are

particularly well-served with over 8,200 paths to explore. So pull on your boots or pump up your tyres and head out on a voyage of discovery.

Other opportunities to make the most of the great outdoors include a canoe trip or a horseback safari, a day's fishing or a round of golf. Those with a head for heights can drift peacefully over Wiltshire's

timeless landscape in a hot air balloon or send their heart rate soaring on a tandem skydive. While intrepid explorers can reach parts of Salisbury Plain inaccessible to many vehicles with an off-road driving experience.

Unleash your inner Sherlock Holmes and search for clues on a treasure trail. Pit your wits against the clock

MARLBOROUGH COLLEGE  
SUMMER SCHOOL

## Discover Create Learn Celebrate

7 July - 3 August 2024

Over **400** courses are waiting for you

Visit [summerschool.co.uk](https://summerschool.co.uk) to find out more

in a real-life escape game. Brush up your language skills. Master new culinary techniques. Kick up some dust with a spin around the rally field. Team up with an expert tour guide to unearth the secrets of the past. Try your hand at archery, climbing, paddle boarding and zip wiring. Or simply relax with a luxurious treatment in one of our spas.

From 3 years old to 90 years young, courses at **Marlborough College Summer School** span the generations. Music and dance, science and technology, body and mind – traditional favourites and inspiring new subjects combine every year in an exciting programme that has something to offer all ages and interests.

With such an enormous range and variety of activities to choose from, if you're tired of the everyday, it's time for Wiltshire.

For further details go to [visitwiltshire.co.uk/activities](https://visitwiltshire.co.uk/activities)



North Wessex Downs



Salisbury Plain Safari



# Celebrate the Seasons in Wiltshire

Each season brings its own joys in Wiltshire, from the budding promise of spring through the languid days of summer, the crisp colour of autumn to the sparkle of winter. Let's take a look at how visitors can enjoy every time of the year. For specific events and festival dates and details please take a look at [www.visitwiltshire.co.uk/whats-on](http://www.visitwiltshire.co.uk/whats-on)

## Spring

The first signs of spring are often snowdrops, shortly followed by daffodils. The grounds of Lacock Abbey usually come to life with clusters of snowdrops during February. Top places to see daffodils include, **Stourhead**, Westonbirt, and all round the beautiful countryside including **Marlborough Downs**, Wylde Valley in between Salisbury and Bath and Cranborne Chase and West Wiltshire Downs **Natural Landscape**.

Bluebells are one of the later signs of spring to arrive and these can be seen in West Woods near Marlborough, Lower Moor Farm, Bluebell Wood near Old Wardour Castle, Grovely Wood near Wilton. Also look out for snakeshead fritillaries at North Meadow near Cricklade.

Marlborough downs



If its baby animals you're after, **Cholderton Rare Breeds Farm** and Studley Grange all welcome visitors to see their new born animals which often include chicks, bunnies, lambs and piglets. For something more exotic take a trip on the wild side to **Longleat** to see baby monkeys in the Safari Park and many of the smaller animals in Animal Adventure.

Head to Melksham for a family friendly town festival with music, food vendors and entertainment. Enjoy a selection of gins at the Chippenham gin festival plus family fun and the Highworth May Day includes traditional Morris dancing. So, there's plenty to whet your appetite.

Salisbury International Arts Festival features a diverse programme of music, theatre, film, dance, spoken word, visual arts, family and free events, created by Wiltshire Creative's Artistic Director Gareth Machin, Associate Artist violinist Harriet Mackenzie, and Festival Producer Lucy Babb, alongside a team of associate curators.

Corsham's Walking Festival caters for a wide range of walking enthusiasts and abilities walks vary in distance from 1.5 to 16.5 miles that go from Easy through Moderate to Challenging.



## Summer

Summer is the time for that great British tradition, a picnic. From a rainbow of tulips to clouds of fragrant roses, or the spectacular abundance of high summer borders, your group can enjoy a relaxing and inspirational exclusive visit to **Iford Manor Gardens**.

Take a visit to the nearby **Bridge Tea Rooms** for delicious teas with homemade cake served by waitresses in Victorian dress – perfect for a quintessential English day out. Get hands-on at some of our museums and join in with some of our fabulous festivals and events taking place during the summer months including Devizes International Street Festival and Carnival and Malmesbury Carnival and Festival.

**Marlborough College Summer School** (7 July - 3 August 2024) provides over 500 courses offering an eclectic programme of creative arts, history, science, body and mind, life skills, sport and country pursuits. There is also an extensive entertainment programme featuring lectures, film nights, evening excursions, recitals and outstanding Gala Performances.

Bradford on Avon Food and Drink Festival celebrates everything that is wonderful about food and drink, whilst the Chalke Valley History Festival is the largest festival in the UK dedicated entirely to history.

## Autumn

Visit Wiltshire's houses and gardens for stunning autumn colour. Top destinations for autumn colours include **Stourhead's** vistas highlighted with burnished leaves; Savernake Forest, North Wessex Downs, where visitors can look out for the Big Belly Oak; the parkland at **Bowood House & Gardens**, and the internationally important Westonbirt, The National Arboretum.

Check the website for up-to-date details for spooky Halloween events! From pumpkin picking at the farm to goulishly good days out in historic surroundings!

Longleat's Sky Safari is an amazing hot air balloon festival. The skies above the estate come to life with all

the vibrant colours of the rainbow as hot air balloons take to the air in an astounding procession.

**Marlborough Litfest** includes fiction, non-fiction, poetry events, workshops, debut novelists, award-winning established names, children's authors and more!

## Winter

Christmas in Wiltshire is a very special time, as our historic towns and villages receive an extra sprinkling of festive magic. **Longleat's** winter wouldn't be complete without the renowned Festival of Light, which takes place mid-November to beginning of January. This illuminating lantern spectacle sees hundreds of silk-strewn scenes and digital installations embellishing the ornate Longleat Estate, bringing the spirit of the festive season to lustrous light.

At **McArthurGlen Designer Outlet Swindon** you can pick up a bargain and tuck into delicious street food as you do your Christmas shopping. Plus enjoy the beautiful decorations and magical Christmas activities too.

Witness **Salisbury Cathedral's** spectacular Darkness to Light Advent Procession, as 1,300 candles light up the Cathedral (end of Nov). Join one of Salisbury Cathedral's atmospheric services or book a behind the scenes tour and view their giant Christmas tree from above! Private tours available to pre-booked groups only.

National Trust properties join in the festive celebrations too. Christmas warmth and cheer with beautiful decorations and celebrations take place at **Avebury**, **Lacock** and **Stourhead**.

There are Lantern Parades in Amesbury and Devizes and pantomimes at Salisbury Playhouse.

Check website for details so you don't miss the bonfire and firework celebrations throughout Wiltshire during November – January. Plus there are various dates throughout November and December for Christmas Light switch on and Christmas Fayres around Wiltshire, look out for specific details online to get you into the Christmas spirit!

Longleat Festival of Light





# Timeless Towns

Find out more in our Wiltshire Towns and Villages Map

## & VILLAGES

The medieval city of Salisbury is a must for anyone visiting Wiltshire. But the county has many more historic towns and villages waiting to be discovered. Surrounded by Wiltshire's timeless landscape, they all have something unique to offer: fascinating history and heritage, stylish independent shops and colourful markets, tempting pubs and restaurants, or great entertainment. Wiltshire welcomes groups to our picturesque towns and villages, particularly during the quieter, shoulder months – see below for coach parking and Electric Vehicle Charging Points (EVCP).



### AMESBURY

Two designated coach spaces in the Central car park **SP4 7JE**  
**EVCP:** Main car park in Amesbury on the A345.



### AVEBURY

National Trust Car Park, Avebury **SN8 1RD**. Can be limited in summer. If full, coaches can drop off/pick up in the High Street.



### BRADFORD ON AVON

Four coach spaces Station Car Park **BA15 1DQ**. Additional coach parking Moulton Drive **BA15 1UF**.

To book Meet and Greet service visit [www.bradfordonavon.co.uk](http://www.bradfordonavon.co.uk) or call 01225 864240.

Click here for group bookings.



### DEVIZES

Awarded Confederation of Passenger Transport UK Coach Friendly status. Two designated drop off points in New Park Street **SN10 1DS** (20 minute limit). Extra spaces at far end of Station Road Car Park **SN10 1BZ**. Four spaces at Wharf Car Park **SN10 1EB**. Call 01380 800400 in advance to arrange free coach parking.



### CHIPPENHAM

Sadlers Mead Car Park **SN15 3PA**.



### CORSHAM

Call 01249 702130 to arrange parking prior to visit.  
**EVCP:** Post Office Lane (Long-Stay) Car Park.



### LACOCK

Hither Way Car Park **SN15 2LG**. Follow signs for National Trust Car Park.



### LUDGERSHALL

Drop off / pick up point for Ludgershall Castle and Cross outside main gate, **SP11 9QT**. Coaches can park in front of the Crown Pub near the War Memorial.



### MALMESBURY

Station Yard Car Park **SN16 9JT**. Drop off point Cross Hayes **SN16 9BZ**. **EVCP:** 2 devices and 4 connectors at Aldi, SN16 9JL.



### MARLBOROUGH

Awarded Confederation of Passenger Transport UK Coach Friendly Status. Designated drop off point on the High Street outside Jubilee Centre **SN8 1LW**. Main coach parking at George Lane Car Park **SN8 4BX**.



### MERE

Off street town centre parking at Salisbury Street, **BA12 6HB** or Castle Street, **BA12 6JA**.



### SALISBURY

Awarded Confederation of Passenger Transport UK Special Certificate for Coach Friendly City. Drop off/pick up point on St John Street **SP1 2SB**. Main coach parking at Millstream Coach Park **SP1 3TA**. Overflow at Britford Park & Ride **SP5 4DS**.



### SWINDON

Drop off/pick up points at the Bus Station in Newbridge Square, **SN1 1EA**. Coach parking at the Swindon Truck Stop, **SN3 4HD**. If visiting McArthurGlen Designer Outlet, coach parking is available on site, **SN3 4ER** – telephone 01793 507600 48 hours in advance. **EVCP:** 2 slow chargers in Whalebridge car park. 2 fast chargers in Brunel North, plus 4 on Civic campus.



### TROWBRIDGE

On-street parking in Canal Road **BA14 8RL**. Coach drop off point in loading bay area behind Shires Shopping Centre **BA14 8AT**. **EVCP:** Cradle Bridge Retail Park, County Way; Lovemead Car Park, Duke Street; Bythesea Road; 94 Newtown; 110-122 Bythesea Road; 32-33 Bythesea Road; 6 Station Approach; County Way; 12 Westbury Road.



### VALE OF PEWSEY

By arrangement at The Waterfront at Pewsey Wharf **SN9 5NU** – call 01672 564020. By arrangement at Crofton Beam Engines **SN8 3DW** – call 01672 870300. At Wilton Windmill **SN8 3SW** for 2 to 3 coaches.




### WARMINSTER

Drop off at Central Car Park, off Station Road **BA12 9BT**. Coach parking 1½ miles away at service station on junction of A36/A350/A3414 **BA12 7RU**. **EVCP:** Morrisons Car Park, BA12 9NT x2; Central Car Park, BA12 9BP x2; Longbridge Service Station, BA12 7DS x2.

### WILTON

The Guild **SP2 0RS**.






## Visit Corsham

**Whatever the season, Corsham has it all**

Stunning heritage, glorious countryside, mouth-watering places to eat and drink, and an abundance of independent shops.

Discover Wiltshire's hidden treasure - just 8 miles from Bath and 4 miles from the M4 (J17).



### Visit Corsham

With its historic buildings, glorious countryside and stunning peacocks wandering the streets, Corsham is a hidden treasure. On the edge of the Cotswolds, this quintessentially English market town has a picture-perfect heritage High Street lined with beautiful buildings, chief among which is the centuries-old **Corsham Court** with its extensive collection of Old Masters and stunning parkland. If it's more

contemporary art you're looking for then **The Pound**, Corsham's arts centre, offers year-round exhibitions and performances. Alternatively, if retail therapy is more your thing, then the town's fantastic array of award-winning independent shops will keep you busy, as will the mouth-watering places to eat and drink.

[www.visit-corsham.co.uk](http://www.visit-corsham.co.uk)



## Bradford on Avon



Bradford on Avon is perfectly set in the dramatic Avon valley; it is a combination of river, canal, and architecture of true character. From small weavers' cottages to grand clothiers' houses; handsome public buildings to medieval barns, ancient places of worship and meandering alleyways all waiting to be explored.

Easily accessible by coach, car, or train and only 6 miles from the World Heritage City of Bath, Bradford on Avon is the perfect place for your group to visit.

- Blue Badge guided tours available to book
- Coach parking close to town centre and the canal
- Online details for groups, include coach parking information, what's on calendar of events, local shops, group friendly restaurants and accommodation.

Book online at [www.bradfordonavon.co.uk/plan-your-visit/travel-trade](http://www.bradfordonavon.co.uk/plan-your-visit/travel-trade)

Email [katie@bradfordonavontown-council.gov.uk](mailto:katie@bradfordonavontown-council.gov.uk) or call 01225 864 240 and ask to speak to the Events & Tourism Officer, Katie Ponsford.

[www.bradfordonavon.co.uk/plan-your-visit](http://www.bradfordonavon.co.uk/plan-your-visit)



## Marlborough

Historic, vibrant Marlborough, with its wonderfully wide High Street, is bursting with charm. Close to Avebury World Heritage site and Savernake Forest in the North Wessex Downs National Landscape, it has been consistently listed in the top ten countryside shopping destinations for having a great mix of independent and national shops, a twice weekly street market, boutique cinema and a host of cafes, pubs and restaurants.

Annual events include a literature festival, summer school, open studios art trail, Mop Fairs, music events and Christmas market.

Shop, eat, explore. Relax by the sparkling River Kennet and in our abundant open spaces – a warm Marlborough welcome awaits you.

**Marlborough – a friendly, historic, beautiful market town.**

Awarded Confederation of Passenger Transport UK Coach Friendly Status. Designated drop off point on the High Street outside Jubilee Centre (SN8 1LW). Main coach parking at George Lane Car Park (SN8 4BX).

Find us on Instagram: [@VisitMarlborough](https://www.instagram.com/VisitMarlborough)

Facebook: [@MarlboroughTC](https://www.facebook.com/MarlboroughTC) X: [@MTCWilt](https://twitter.com/MTCWilt)s

[www.marlborough-tc.gov.uk/visitors](http://www.marlborough-tc.gov.uk/visitors)



# WILTSHIRE ON SCREEN

**From swashbuckling adventures to literary classics, Dr Dolittle to Dr Who, Wiltshire locations have played a leading role in a host of big screen movies and TV costume dramas.**

If you're looking to create a film/tv/literature themed itinerary or wishing to celebrate the 250th Jane Austen Anniversary in 2025, consider visiting some of these Wiltshire locations with your group. For more information on how to follow in the footsteps of the stars go to [visitwiltshire.co.uk/film](http://visitwiltshire.co.uk/film)

**Bowood House and Gardens** – Locations around this magnificent property were chosen to feature in series 4 of BBC's *Poldark*, representing Hyde Park and the Serpentine lake among others.

**Bradford on Avon** – This charming town featured in the film version of *Downton Abbey* (2019) and has also appeared in *The White Princess* (2017) and *Creation* (2009). Its Tithe Barn and surrounding areas were seen in the BBC's *Wolf Hall* (2015) and *Robin of Sherwood*.

**Corsham** – The High Street of this attractive market town was selected as the perfect match for 18th century Truro in series one of BBC's *Poldark* (2015). Locations near Corsham also featured in *Lark Rise to Candleford* (2008-2011).

**Iford Manor Gardens** – Most recently these romantic, awardwinning gardens featured in a re-make of *The Secret Garden* (2020). Iford Manor has also appeared in *The Razor's Edge* (1984), the BBC's *Robin of Sherwood* (1984-1986) and ITV's *Element of Doubt* (1996).

**Lacock** – Having featured in the final series of ITV's *Downton Abbey* (2015) this charming National Trust village made a welcome return in the film version (2019). It has also played host to a variety of classic films including *The White Princess* (2017), *Wolf Hall* (2015),



Corsham - Poldark

*The Wolfman* (2010), *The Other Boleyn Girl* (2008) and *Pride and Prejudice* (2005). Scenes from *Harry Potter and the Half Blood Prince* (2009) and *Harry Potter and the Chamber of Secrets* (2002) were shot here. Lacock featured in ITV's costume drama *Dr Thorne* (2016) too, and in the BBC production of *Cranford* (2007).

**Longleat** – The safari park has starred in various series of the BBC's *Animal Park*, while the Elizabethan house featured in *The Four Seasons* (2008), based on two of Rosamunde Pilcher's best-selling novels. Other productions filmed here include a Bollywood movie.

**Mompesson House** – Situated in Salisbury's Cathedral Close this National Trust mansion achieved celebrity status as the London home of Mrs Jennings in the Oscar-winning version of *Sense and Sensibility* (1995).

**Salisbury Cathedral** – The cathedral was the inspiration behind TV mini-series *Pillars of the Earth* (2010). With its awe-inspiring Gothic architecture, has also featured prominently in historical dramas. From *The Other Boleyn Girl* (2008) to the more recent Netflix series *The Crown* (2016) and *Elizabeth: The Golden Age* (2007), the cathedral's grandeur has lent authenticity to stories spanning different periods.

**Stonehenge** – In recent years this iconic location has featured in *Transformers: The Last Knight* (2017), *Thor: The Dark World* (2013) and *Doctor Who* (2010). It also appeared in the BBC production of *Tess of the d'Urbervilles* (2008).

**Stourhead** – This National Trust property's magnificent gardens were used in the filming of *Pride and Prejudice* (2005) for the scene where Lizzie initially rejects Darcy's proposal of marriage.



# Refreshment Stops and Retail Therapy

## Food & Drink

From the freshest of local produce to a wealth of traditional specialities handed down the generations, you'll find plenty to whet your appetite in Wiltshire. Luckily, life moves at a gentle pace here, so you'll have time to savour the gastronomic delights conjured up by food and drink producers around the county.

Start your day by tucking into a hearty Wiltshire breakfast. Then linger over elevenses. Treat yourself to afternoon tea. While away the hours over a long lunch or dinner.

We pulled together a selection of restaurants, cafés, pubs, hotels and attractions that are keen to attract travel trade/group business. We recommend you call in advance to check that they are able to accommodate your group.

### Amesbury Area

- A Little Place, near Stonehenge
- Cholderton Rare Breeds Farm Park and Bluestone Vineyards
- Holiday Inn Salisbury-Stonehenge

### Bradford on Avon Area

- The Bridge Tea Rooms
- Iford Manor Gardens

### Chippenham

- Angel Hotel, Chippenham

### Calne Area

- Bowood House and Gardens
- Bowood Hotel, Spa and Golf Resort

### Lacock Area

- The Stables Cafe

### Malmesbury Area

- The Old Bell Hotel

### Marlborough Area

- Avebury

### Trowbridge

- Parade House (pre-book only)

### Salisbury Area

- The Bell Tower Tea Rooms
- The Refectory
- Legacy Rose & Crown,
- The Stones Hotel
- Milford Hall Hotel

### Swindon Area

- Lydiard House Museum
- McArthurGlen Designer Outlet
- REME Museum, Lyneham
- STEAM – Museum of the Great Western Railway
- Studley Grange Garden and Leisure Park

### Warminster Area

- Stourhead Restaurant
- Old Bell Hotel
- Bishopstrow Hotel & Spa



Holiday Inn, Salisbury

**Please note:** on-site parking may be limited and advance booking is required for groups.

## Quick Stops

The cafés or restaurants attached to the following attractions can be accessed without paying an entrance fee:

- Avebury
- Boscombe Down Aviation Collection
- Bowood House & Gardens
- Cholderton Rare Breeds Farm Park
- Coffee Gems
- Crofton Beam Engines
- Crop Circle Exhibition & Centre
- Fisherton Mill
- Iford Manor Gardens
- Kennet & Avon Canal Trust, Bradford on Avon
- Kennet & Avon Canal Trust, Devizes
- Lacock Abbey, Village & Fox Talbot Museum
- Larmer Tree Gardens
- Lydiard House & Park
- McArthurGlen Designer Outlet Swindon
- The Rifles Berkshire & Wiltshire Museum
- Salisbury Cathedral & Magna Carta
- The Salisbury Museum
- Stourhead
- St Peter's Church, Marlborough
- Studley Grange Garden and Leisure Park
- Swindon & Cricklade Railway
- Wilton Windmill
- Army Flying Museum
- Holburne Museum
- Roman Baths



Bridge Tea Rooms

## Retail Therapy

**Whether you're looking for designer brands or high street names, independent outlets or shopping malls, farm shops or markets, you'll find everything you want in Wiltshire!**

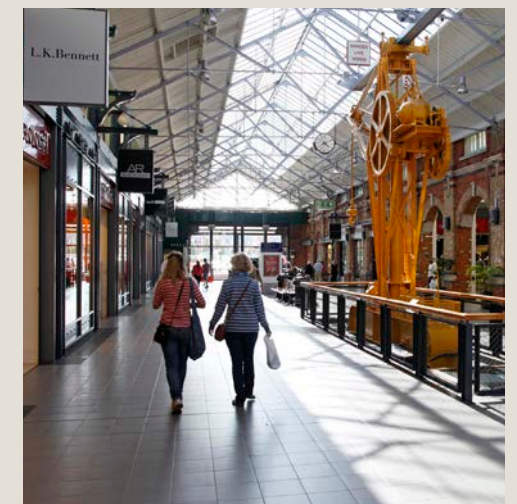
The **McArthurGlen Designer Outlet Swindon** housed in the tastefully converted Grade II listed buildings of Brunel's former Great Western Railway works makes a great day out. Over 90 stores to choose from and a huge range of high street and designer labels. Up to 60% off recommended retail prices and an additional 10% discount for groups who pre-book; plus join the McArthur Glen club for event more savings.

All around Wiltshire, numerous small, family-run outlets continue to thrive. Offering a relaxed and unhurried shopping experience as they've been doing for generations.

For stylish stores in a cosmopolitan setting, the quintessentially English towns of **Marlborough** and **Bradford on Avon** are popular choices. As is **Corsham**, where many of the Bath stone buildings on High Street are independent businesses. In Salisbury you'll find galleries, studios and workshops.

First prize for the longest running market goes to Trowbridge, Wiltshire's county town, where stallholders have been trading since the year 1200. These days, it's on a Wednesday. Hot on its heels, history-wise, is Salisbury's Charter Market, which has been coming to the city on Tuesdays and Saturdays (except the third Tuesday in October) for nigh on 800 years.

Other bustling market towns include Amesbury (Wednesday), Bradford on Avon (Thursday), Calne (Friday), Chippenham (Friday and Saturday), Corsham (Tuesday), Devizes (Thursday), Highworth (Saturday), Marlborough (Wednesday and Saturday), Warminster (Friday), and Wroughton (Friday). For up-to-date details of these and other markets go to [visitwiltshire.co.uk/markets](http://visitwiltshire.co.uk/markets)



McArthurGlen



# The Bridge Tea Rooms

24a Bridge Street, Bradford on Avon, Wiltshire BA15 1BY



Double Winners of The Tea Guild's Top UK Tea Place and the Home of West Country Afternoon Teas: Judged as 'near perfect' and awarded The UK's Top Tea Place by the prestigious UK Tea Guild The Bridge Tea Rooms offers the very best in traditionally British Afternoon Teas, lunches and light meals throughout the day.

The afternoon ritual of serving tea has been developed to a fine art here. A Hansel & Gretel-style exterior leads onto the cosiest of dining rooms, filled with homely trinkets, hefty wooden beams, the soft chink of fine bone china, the finest leaf teas, and friendly staff in Victorian costumes serving home-made cakes, pastries and sandwiches. Housed in a former blacksmith's cottage dating from 1502, the Bridge Tea Rooms positively oozes atmosphere, and the classical music playing gently in the background sets a tranquil tone.

Breakfast served from 10am til 11.30am, Afternoon Teas and Lunches are served between 11.30am and 4.30pm.

**Booking at table can be done by visiting**  
**[www.thebridgetearooms.co.uk/bookings](http://www.thebridgetearooms.co.uk/bookings) or calling 01225 865537**

[www.thebridgetearooms.co.uk](http://www.thebridgetearooms.co.uk)

# WILTSHIRE'S COUNTRYSIDE RETREAT

## bishopstrow

HOTEL • KITCHEN • SPA

bishopstrowhotel.com | 01985 804680  
 info@bishopstrowhotel.com | @bishopstrowhotel



# Group Friendly Accommodation

For additional refreshment stops refer to pages 36 and 37.

With so much to see and do around the county, why not extend your visit by adding an overnight stay? In Wiltshire you'll find plenty of group-friendly places to stay, with something to suit every taste and pocket. All within easy reach of our timeless wonders, timeless places, timeless pleasures and timeless nature.

## Well-known hotel chains

Holiday Inn, Hilton, Mercure, Legacy and Best Western are well represented in Wiltshire and will often have larger numbers of rooms and excellent trade rates.

## Boutique & smaller hotels

Independently owned, boutique-style accommodation offers a more individual experience and often will suit smaller groups or FIT's.

## Self-catering

Self-catering cottages can be a great idea for families and friends groups.

## Something a little different?

If you like to be at one with the great outdoors there are camping, glamping, caravan and motor home pitches, as well as canal boats, log cabins, canvas lodges, eco pods and shepherd's huts.

## On a budget?

Many places to stay will offer discounted rates for groups, as well as free accommodation for your coach driver and/or group leader. A youth hostel can also be an excellent and economical choice. For details of other options see [www.visitwiltshire.co.uk/accommodation](http://www.visitwiltshire.co.uk/accommodation)

## What next?

We've highlighted suitable accommodation for the trade to contract in the areas they are located. Please contact them directly for further information about trade rates, availability and to make a booking.

For additional places to stay please visit **Wiltshire's Maps and Guides**.

## Meal stops

Many accommodation providers offer quick and easy lunch or tea options for groups.

**The Stones Hotel** and **Holiday Inn Salisbury Stonehenge** are located on the outskirts of Salisbury. There is plenty of free coach parking and it is perfect for groups to meet, eat and drink.

**The Old Bell Hotel** in Warminster is a charming 14th century coaching Inn. It makes a great 'meal stop' for groups as it's a stone's throw from Longleat so could be

easily combined with a Longleat House visit. There free town centre parking.

**Milford Hall Hotel** is situated near the centre of Salisbury. Recently refurbished the restaurant has various menus to suit both individual travellers and groups.

**A Little Place – Fairlawn House**, located in Amesbury near Stonehenge can arrange afternoon teas and meals for small groups. Pre-order is required.

## Find out more in our Wiltshire Maps and Guides

**THE OLD BELL HOTEL**  
MALMESBURY

**ENGLAND'S OLDEST HOTEL**  
IN THE HEART OF THE SOUTH COTSWOLDS

Vibrant rooms, delicious food, bespoke cocktails and dog friendly. Within easy travelling distance of London, Oxford and Bath.

[www.oldbellhotel.co.uk](http://www.oldbellhotel.co.uk)

f TheOldBellHotel    o oldbell\_hotel

LOCATION	WEBSITE	TELEPHONE	NO. OF ROOMS <sup>1</sup>	COACH PARKING
<b>Amesbury Area</b>				
<b>A Little Place - Fairlawn House</b>	<a href="http://alittleplace.co.uk">alittleplace.co.uk</a>	01980 622103	15	Amesbury Central Car Park nearby
<b>Holiday Inn - Salisbury Stonehenge</b>	<a href="http://hisalisbury-stonehenge.co.uk">hisalisbury-stonehenge.co.uk</a>	0345 241 3535	103	On site
<b>Stonehenge Hostel</b>	<a href="http://stonehengehostel.co.uk">stonehengehostel.co.uk</a>	01980 629379	70 beds <sup>2</sup>	At Cholderton Rare Breeds Farm next door
<b>Bradford on Avon Area</b>				
Widbrook Grange Hotel	<a href="http://widbrookgrange.co.uk">widbrookgrange.co.uk</a>	01225 864750	9	On site
Woolley Grange Hotel	<a href="http://woolleygrangehotel.co.uk">woolleygrangehotel.co.uk</a>	01225 864705	25	On site
<b>Calne Area</b>				
<b>Bowood Hotel, Spa &amp; Golf Resort</b>	<a href="http://bowood.org">bowood.org</a>	01249 822228	43	On site
<b>Castle Combe Area</b>				
Manor House Hotel	<a href="http://exclusive.co.uk/the-manor-house">exclusive.co.uk/the-manor-house</a>	01249 782206	50	Call for details
<b>Chippenham Area</b>				
<b>Angel Hotel <sup>3</sup></b>	<a href="http://angelhotelchippenham.co.uk">angelhotelchippenham.co.uk</a>	01249 652615	50	On site
Lucknam Park Hotel & Spa	<a href="http://lucknampark.co.uk">lucknampark.co.uk</a>	01225 742777	43	On site
<b>Cricklade Area</b>				
Cricklade House Hotel	<a href="http://crickladehotel.co.uk">crickladehotel.co.uk</a>	01793 750751	45	On site
<b>Malmesbury Area</b>				
<b>The Old Bell Hotel</b>	<a href="http://oldbellhotel.co.uk">oldbellhotel.co.uk</a>	01666 822344	34	Call for details
Whitley Manor Hotel & Spa	<a href="http://whitleymanor.com">whitleymanor.com</a>	01666 822888	23	On site
<b>Salisbury Area</b>				
Stonehenge Campsite & Glamping Pods	<a href="http://stonehengecampsite.co.uk">stonehengecampsite.co.uk</a>	07786 734732	Capacity 8-20	On site
Riverside Hotel	<a href="http://riversidesalisbury.co.uk">riversidesalisbury.co.uk</a>			
Merchants House Hotel	<a href="http://themerchantshousehotel.co.uk">themerchantshousehotel.co.uk</a>	01722 326600	37	Millstream Coach Park
<b>Milford Hall Hotel &amp; Spa</b>	<a href="http://milfordhallhotel.com">milfordhallhotel.com</a>	01722 417411	45	On site
<b>Rose &amp; Crown Hotel <sup>4</sup></b>	<a href="http://legacy-hotels.co.uk">legacy-hotels.co.uk</a>	01722 328615	34	On site
<b>The Stones Hotel</b>	<a href="http://thestoneshotel.co.uk">thestoneshotel.co.uk</a>	01722 782020	44	On site
White Hart Hotel <sup>5</sup>	<a href="http://mercure.com">mercure.com</a>	01722 327476	68	On site
<b>Warminster Area</b>				
Bishopstrow Hotel & Spa	<a href="http://bishopstrowhotel.com">bishopstrowhotel.com</a>	01985 804680	36	On site
<b>Old Bell Hotel</b>	<a href="http://oldbellwarminster.co.uk">oldbellwarminster.co.uk</a>	01985 216611	15	Call for details
<b>Swindon</b>				
DoubleTree by Hilton Swindon	<a href="http://hilton.com/en/hotels/swihndi-doubletree-swindon/">hilton.com/en/hotels/swihndi-doubletree-swindon/</a>	01793 881777	171	On site

## Notes relating to the table above:

<sup>1</sup> Please note: rooms may be a mix of singles, doubles, twins, triples etc <sup>2</sup> Rooms are often in bunk form – please check at the time of booking

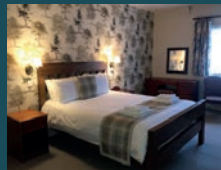
<sup>3</sup> Best Western / Best Western Plus Hotels <sup>4</sup> Legacy Hotels <sup>5</sup> Mercure Hotels





## Welcome to our traditional town centre coaching inn

- We are open **ALL DAY, EVERY DAY**, for food & drinks
- On-site customer parking • Coffees, teas, pastries & cakes • Cream Teas
- Thai Chilli restaurant • Pub Classics menu • Traditional Sunday lunches
- Excellent en-suite accommodation • Dog-friendly



42 Market Place  
Warminster  
BA12 9AN

oldbellwarminster

oldbellwarminster

[www.oldbellwarminster.co.uk](http://www.oldbellwarminster.co.uk)



## Fairlawn House

Our 15 bedroom Georgian town house is a cosy home from home, moments from historic Stonehenge.

- Authentically local
- Afternoon teas on request
- Private cycle tours
- Close to historical sites

15% off room rates for bookings of 12 to 15 rooms

**A LITTLE PLACE**

42 High Street, Amesbury  
[@littleplacestays](http://www.alittleplace.co.uk)



**MH**  
MILFORD HALL HOTEL

- Stunning full refurbishment completed 2024
- Located in the heart of Salisbury
- Georgian Manor House boasts 48 luxurious bedrooms
- 21 Ground floor bedrooms with walk-in Shower
- Serving the finest quality food using local ingredients
- Brand new dazzling Garden Bar
- Walking distance to Salisbury Cathedral, historic Market Square, and so much more....!
- Short distance to Stonehenge, Wilton House and many more amazing attractions

Milford Hall Hotel, 206 Castle Street, Salisbury, Wiltshire SP1 3TE  
T: 01722 417411 E: [reception@milfordhallhotel.com](mailto:reception@milfordhallhotel.com)  
[www.milfordhallhotel.com](http://www.milfordhallhotel.com)



**THE STONES HOTEL**

Located in the Cathedral City of Salisbury, the beautifully appointed Hotel has benefitted from a £1m refurbishment with luxury bedding, a stylish bar restaurant serving mouth watering fare - be it for a quick bite, breakfast, lunch or dinner. With ample free onsite car/coach parking, we offer fantastic packages for tour groups & stop over lunches.

Call 01722 782020  
[www.thestoneshotel.co.uk](http://www.thestoneshotel.co.uk)

**A modern Group Friendly Hotel**  
with 103 bedrooms, the perfect choice for an extraordinary tour.

The nearest hotel to **Stonehenge** beside the **A303**, easy access from **London**, the **West Country** and to the picturesque county of **Wiltshire**. **Free parking** and **Wi-Fi** throughout. Our **Solstice Bar and Grill** can provide a quick refreshment stop, breakfast, lunch or dinner.

Call **0345 241 3535**  
reservations@hisalisbury-stonehenge.co.uk  
hisalisbury-stonehenge.co.uk



## BEST WESTERN PLUS ANGEL HOTEL A 3\* HOTEL IN THE HEART OF WILTSHIRE

- 17th Century Coaching Inn
- Easy access to Bath, Bristol and places of interest such as Lacock Abbey, Longleat and Bowood House
- 50 contemporary bedrooms with complimentary parking and high speed WiFi
- Standard, Executive, Superior Four Poster and Twin rooms
- Ground Floor bedrooms with walk in showers
- Marketplace Restaurant, Bar and Garden
- Health Club with swimming pool

Best Western Plus Angel Hotel, 8 Market Place, Chippenham, Wiltshire, SN6 5JD  
Tel: 01249 652515 | [reception@angelhotelchippenham.co.uk](mailto:reception@angelhotelchippenham.co.uk)  
 [angelhotelchippenham](https://www.facebook.com/angelhotelchippenham) [angelhotelchippenham](https://www.instagram.com/angelhotelchippenham)



Nestled on the banks of the River Avon sits the four-star Legacy Rose & Crown. A picturesque hotel with 34 guest bedrooms, dating back to the 13th century, and offering unrivalled views of the tranquil meadows towards Salisbury Cathedral.

The bedrooms in the historic building boast period features along with modern amenities, whilst the River's Edge restaurant offers delectable all-day dining.

Group leaders and trip organisers can take advantage of bespoke packages and benefits.







Flower Festival, Salisbury Cathedral

**Wiltshire is a perfect year-round destination for groups. As it's only 90 minutes or less from London – and within two hours of the south coast, the Midlands and Wales – it's easily accessible too.**

We'd love you to choose Wiltshire for your next group visit or outing, so our aim is to make your job as easy as possible. Together with our partners we provide you with a range of tools to help you sell our beautiful county to your customers.

#### Exclusive Offers for Groups

Special offers are one of the ways in which attractions, accommodation providers and other businesses around Wiltshire extend a warm

welcome to groups. So keep an eye out for the following and remember to confirm details when you book:

- Discounted rates for entry to attractions
- Fast track entry to attractions
- Bespoke activities for groups
- Exclusive tours, available only to groups
- Special deals on food and drink
- Discounted room rates for residential visits/free rooms if over a certain number of guests
- Discount vouchers to spend during your stay

#### Benefits for Group Leaders and Coach Drivers

The following are just some of the added extras often available for group leaders and coach drivers. Be sure to request details of what is on offer at the time of booking:

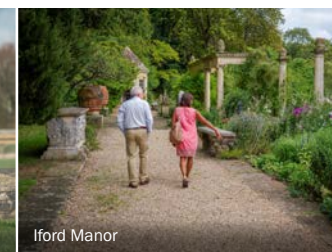
- Free or discounted accommodation for overnight visits
- Free or discounted refreshments or meal vouchers
- Free or discounted entry to attractions
- Free coach parking and/or easy access drop off points
- Places where coach drivers can rest while waiting for their group
- Free fact-finding trips in advance of your group's visit



Bradford on Avon Tithe Barn



Cholderton Rare Breeds Farm Park



Iford Manor



Mompesson House

#### Commissionable Product

If you are an operator and looking for commissionable product please email [info@visitwiltshire.co.uk](mailto:info@visitwiltshire.co.uk) for advice.

#### Familiarisation Visits

VisitWiltshire welcomes the trade on educational familiarisation visits, designed to improve your product knowledge and give you a taste of what Wiltshire has to offer. Open to coach operators, tour operators, travel agents, group travel organisers and trade press, self-drive fam visits are available out of season (Oct-March). These will introduce you to a variety of things to do suitable for the trade to contract for future groups or FIT visits. To find out more and

register your interest to attend, email [info@visitwiltshire.co.uk](mailto:info@visitwiltshire.co.uk)

#### Itinerary Planning, Photos and Editorial

We are always happy to provide photos and editorial for you to use in promoting your own tours, and offer an itinerary planning service to help you make the most of your visit to Wiltshire – just let us know what places and/or themes are of interest and we will do the rest.

#### Newsletter

Our regular groups' newsletters are a great way to stay in touch and keep up to date with all the latest news – **sign up today.**

#### VisitWiltshire Website

Covering everything from coach parking and itinerary ideas to accommodation and attractions suitable for groups, plus our travel trade toolkit and so much more, our website is packed with useful information. So if you are planning on bringing groups to Wiltshire, take a look at [visitwiltshire.co.uk/groups](http://visitwiltshire.co.uk/groups)

#### Travel Trade Information

We have put together trade specific information from a range of Wiltshire businesses and destinations who look forward to welcoming your groups and FIT visitors.

Find out more at [www.visitwiltshire.co.uk/groups](http://www.visitwiltshire.co.uk/groups)



AROUND WILTSHIRE		Map Ref		Map Ref
Alex Moulton Charitable Trust (The Hall)	D2		Stone Daisy Brewery and Witchmark Distillery	F2
Amesbury	E4		Stonehenge	E4
Amesbury History Centre	E4		Stourhead	E1
Atwell-Wilson Motor Museum	C3		Studley Grange Garden and Leisure Park	B4
Avebury	C4		Swindon & Cricklade Railway	B4
Bishopstrow Hotel and Spa	E2		The Arc - Climbing Academy	C2
Bowood House & Gardens	C3		The National Self Build & Renovation Centre	B4
Bradford on Avon	D2		The Pound Arts Centre	C2
Calne	C3		Tidworth	D4
Carvers Hill Estate and Winery	C4		Tisbury	F3
Castle Combe	C2		Towpath Trail	D2
Castle Combe Circuit	C2		Treasure Trails	Various
Chalke Valley History Festival	F3		Trowbridge	D2
Chippenham Museum	C2		Trowbridge Museum	D2
Chippenham Pitstop	C2		Vintage Classics	C2
Cholderton Rare Breeds Farm Park	E4		Wadworth Brewery	D3
Bluestone Vineyard	E4		Warminster	E2
Corsham	C2		Westbury	D2
Cotswold Water Park	A3/B3		Wilton	F3
Cricklade	B3		Wilton Windmill, near Marlborough	D5
Crofton Beam Engines	D4		Wiltshire Museum	D3
Crop Circle Exhibition and Information Centre	D4		Wiltshire Outdoor Learning Team	Various
Deves	D3		Wiltshire's White Horses	Various
The Guild	F3			
Highworth	B4		<b>SALISBURY</b>	Map Ref
Honeystreet Boats	E4		Boscombe Down Aviation Collection	F4
Iford Manor Gardens	D2		Fisherton Mill   Gallery   Café   Studios	
Lacock	C2		GoSkydive	F4
Lacock Abbey, Village & Fox Talbot Museum	C2		Mompesson House	F4
Langford Lakes, Wiltshire Wildlife Trust	E3		Old Sarum	F4
Larmer Tree	F2		The Rifles Berkshire & Wiltshire Museum	F4
Longleat	E2		River Bourne Community Farm	F4
Lower Moor Farm, Wiltshire Wildlife Trust	B3		Salisbury	F4
Ludgershall	D5		Salisbury Art Scene	F4
Lydiard House & Park	B4		Salisbury Cathedral & Magna Carta	F4
Malmesbury	B2		Salisbury Escape Rooms	F4
Marlborough	C4		The Salisbury Museum	F4
McArthurGlen Designer Outlet Swindon	B4		Salisbury Racecourse	F4
Melksham	C2		Salisbury Reds	F4
The Merchant's House	C4		St Thomas's Church	F4
Mere	F2		The Stonehenge Tour	F4
New Forest Cycling Tours	D3			
Old Wardour Castle	F2		<b>ON THE WILTSHIRE BORDERS</b>	Map Ref
PGL Liddington	B4		American Museum & Gardens	C1
Parade House	D2		Army Flying Museum	E5
Pewsey	D4		Bombay Sapphire Distillery	D5
REME Museum	B3		Cotswold Wildlife Park	Off A4
Rick Stein, Marlborough	C4		Hawk Conservancy Trust	E5
Royal Wootton Bassett Town Hall Museum	B3		Holburne Museum	C1
Salisbury Plain Safaris	E3		Kelmscott Manor	A4
St Michael's Church	B3		Roman Baths	C1
St Peter's Church, Marlborough	C4		Royal Signals Museum	Off G2
STEAM - Museum of the Great Western Railway	B4		Westonbirt, The National Arboretum	B2





*It's time for...*

# Wiltshire



[visitwiltshire.co.uk](http://visitwiltshire.co.uk)